

AMRAD Medical

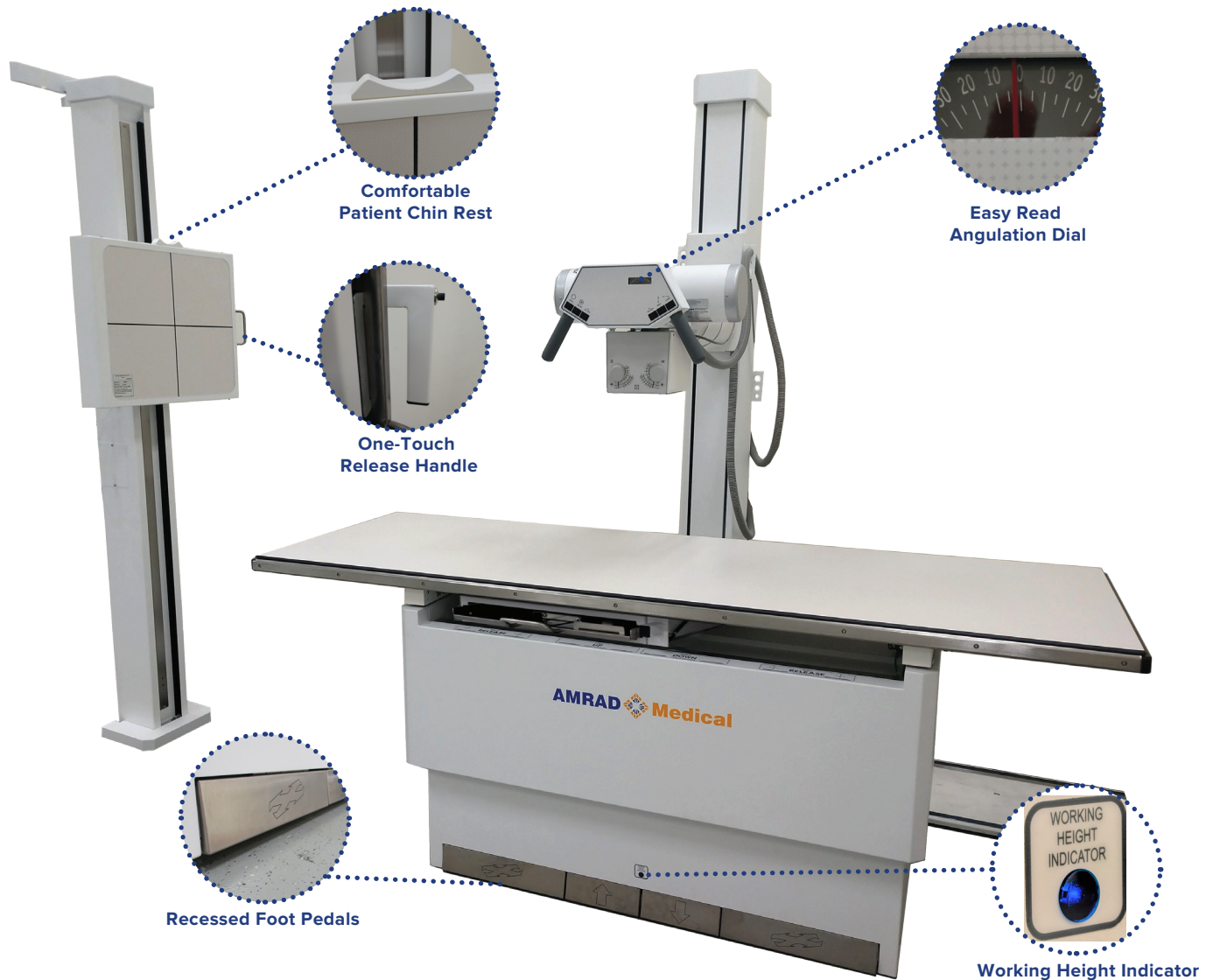


FMT *Classic*

FLOOR MOUNTED TUBE STAND SYSTEM

Performance, Versatility, and Low Cost of Ownership

The FMT Classic delivers maximum capability and is designed for use in medium to high volume clinics. Technologist-friendly features, such as the Easy-Read Angulation Dial and One-Touch Release Handle make positioning easy and helps to improve patient throughput. Safety features like the Recessed Foot Pedals and positioning features like the Comfortable Patient Chin Rest and Table Working Height Indicator allow the technologist to focus on the patient improving the quality of the patient experience.



Comfortable Patient Chin Rest

Conveniently placed chin rest ensures patient comfort and aligns the body to the receptor for upright exams.

One-Touch Release Handle

Refine equipment positions with the touch of a button.

Table Working Height Indicator

Indicator light for optimal working height of elevating table.

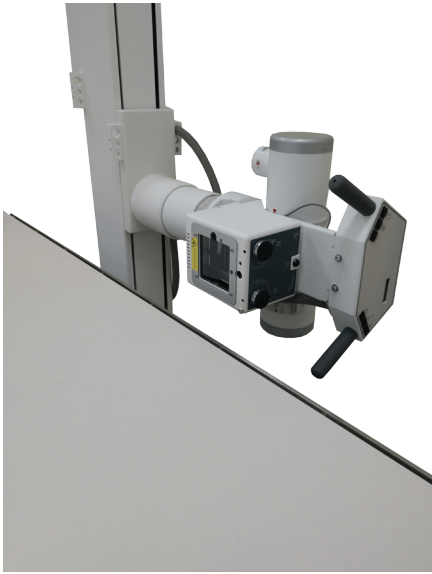
Easy-Read Angulation Dial

The system's easy-read angulation dial makes identifying and adjusting angles fast and accurate.

Recessed Foot Pedals

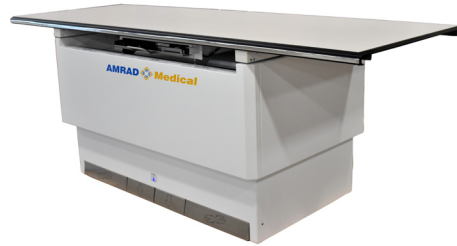
Recessed four-pedal design provides easy operation and patient safety.

Features and Benefits



Floor Mounted Tubestand

- Floor mounted rail for longitudinal positioning to table and wall stand
- Transverse and rotational capabilities for a broad range of patient exams including cross table lateral
- Minimum ceiling height requirement of 87" helps reduce costly room renovations



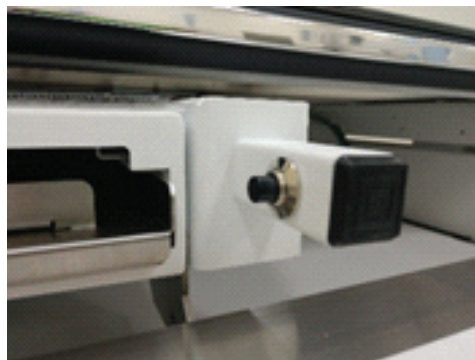
Elevating Table

- Elevating, four-way-float, flat top for easy transferring and positioning of patients
- 400 pound patient weight capacity
- Recessed four pedal design provides easy operation and patient safety
- Indicator light for optimal working table height



Wallstand

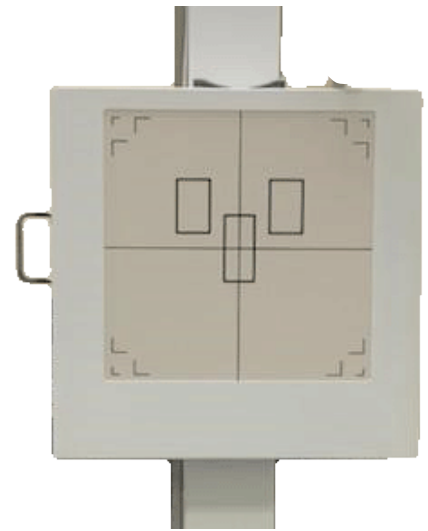
- Center mount fully counterbalanced
- Push button lock release handle for easy positioning
- Comfortable patient chin rest



Available Options for Any Need and Any Size Budget



S210 Non-Elevating Table (400 LB Capacity)



J1000 Premier Wall Stand

Smart Investment

The FMT Classic offers equal features and earns equal reimbursement to all of more costly competition and all of this at 5 times the warranty.

Smart Decisions equal smart investments. Be Smart!

- The FMT Classic can be configured with a variety of x-ray generators and x-ray tubes to meet the clinical requirements of any imaging environment
- Traditional floor mount designed for long-life and low cost of ownership
- Industry leading 5 Year parts warranty
- The FMT Classic is compatible with all DR solutions



www.amradmedical.com

SUMMIT INDUSTRIES, LLC
7555 N. Caldwell Avenue, Niles, Illinois 60714
(p) 773-353-4000 | (p) 1-800-729-9729

Certified System
SAI GLOBAL
ISO 13485
Quality



LITR031-1120