



Mobile Analog X-Ray System
Challenger 5200





Mobile Analog X-Ray System **Challenger 5200**

PRODUCT DESCRIPTION

Product Usage

Challenger 5200 is a high frequency mobile X-ray radiography system, suitable for radiology department, orthopedics, ward, emergency room, operating room, ICU and other departments.

With flexible movement, easy operation, high efficiency, to meet the radiography for all of human body's parts, such as head, limbs, chest, spine, lumbar vertebrae, abdomen, etc.

Product Specification

1. Generator output: 5.0 kW
2. kV range: 40 kV - 120 kV in 1kv steps
3. mA range: 25~100 mA
4. Exposure time: 4 films per min, less than 20 ms per film
5. X-ray tube: Stationary anode tube with a focal spot of 1.4*1.4 mm
6. Collimator: Bright field light beam collimator with 120 W halogen lamp and auto shut-off facility.
7. Power requirements: Single phase 220 v/110v Voltage tolerance; 50 Hz/60Hz power supply.
8. Mobile stand: Light-weight, low height mobile and easily maneuverable stand.
9. The mobile radiographic unit also include a handheld control and a microwave wireless remote control for the 20-meter microwave remote Without the restriction of Barriers and directional, different from the infrared remote control . Grids reduce the fog line filters and raise the degree of scattering contrast.
10. The unit is provided with a line (power) cord of acceptable durability, quality, length and is secured with adequate strain reliefs The unit include, power plugs that are sufficient for the maximum voltage and current of the unit.
11. The maximum distance from the ground: $\geq 2000\text{mm}$, and minimum distance from the ground: $\leq 500\text{mm}$. Rotating around the horizontal axis 180° , rotation around the vertical: $\pm 90^\circ$, the collimator can rotate 180° , column can rotate $\pm 90^\circ$.

Product Advantages

1. Monoblock

- High frequency and High voltage monoblock, 18 years experiences, make sure the stability quality.
- 50kHz inverter frequency, good x-ray quality, low dose, world top-level technology.
- Thermal capacity 500KJ, long time continuous exposing.
- With digital closed loop control technology and fault alarm function

2. Exposure Controller

- Hand controller -- wired exposure
- Microwave controller -- wireless remote, within 10 meters



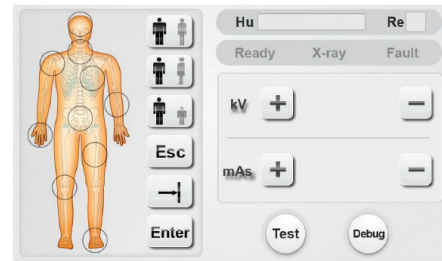
3. Self Balance Function

- The support arm can stop at any position, that's our self balance technology, easy operation.

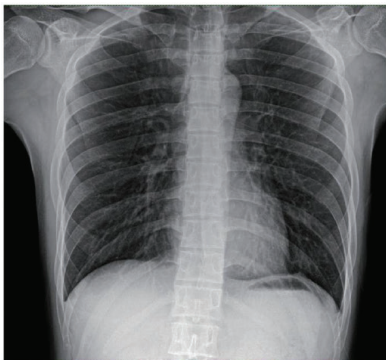


4. LCD Touch screen

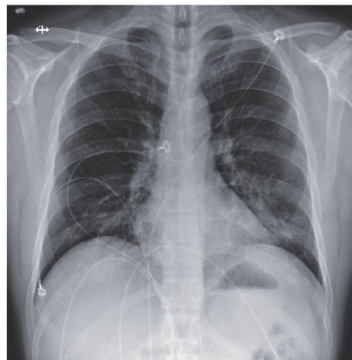
Equip with touch screen controller, Human body graphic for parameter choice.



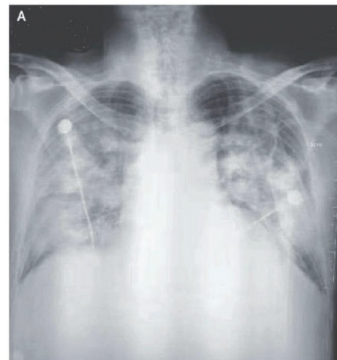
5. Chest X-ray



Normal Chest



Pneumonia



COVID-19

Mobile Analog X-Ray System Challenger 5200





3403 NW 82nd Avenue, Suite 102 E.
Doral, Florida 33122. USA
www.hosmed-inc.com