



Mammography System  
**MIR 6000**



# Digital Mammography System

With the improvement of people's life and women's consciousness of health, Digital Mammography System is becoming a routine examination device in hospital. In order to meet the needs of market, Hedy Swan Series digital mammography system was launched; it integrates great image quality, flexible operation, good examination experience and beautiful design in one system. It is a special designed product for Women healthcare and it will bring a brand new experience on digital diagnosis of breast.





# Beautiful Frame Perfectly Unified Appearance and Inherent



## LSOCENTER STREAMLINE DESIGN

It can radiography all position with any angle as you like. Vibrating grid, zoom mode, telescopic switch, electric operation, preset position, angle remember and auto one key positioning features make the operation more convenient and flexible.

## INTELLIGENT FLEXIBLE OPPRESSION

Real time pressure display, automatically stop compressing at the best position, ensure the full breast completely pressed under safe and comfortable surroundings, pressure would be automatically released after the examination finished in the first time.

## GRACEFUL STREAMLINE DESIGN

Unlike the traditional medical devices with cold and inflexible feelings, our MIR 6000 was designed from the vision of female, the whole system with smooth, elegance and graceful appearance to create a warm atmosphere for examination and reduce patient's sense of fear effectively.

## ACCORD WITH ERGONOMICS

The console accord with the design principle of ergonomics, it makes the operation easier and more comfortable.



# Humanization Design, Easy to Work

## **SIMPLIFY THE WORKFLOW**

One key positioning, move to the designated position automatically; One key exposure, full automatic AEC, All parameters settings and filter selection are completed automatically;  
Auto-mirror, body posture, position memory and mirror placement.

## **FRIENDLY INTERFACE**

The software with friendly interface; position show by humanoid schematic diagram, automatic generation of standardized examination protocol; large color LCD screen for convenience of observation and operation.





## RICH OPTIONS

Support 1.5X and 1.8X magnification radiography component and different type options of oppression disc. Support bar code reader and fingerprint recognition module; Let the cases input and department management into the era of intelligent.

## OPEN THE INTERFACE FOR EASY INTERCONNECTION

It is compatible with DICOM3.0, which can seamlessly interconnect with the HIS/RIS/PACS, and automatically generated the worklist, and it can connect with Hedy Cloud remote consultation system.

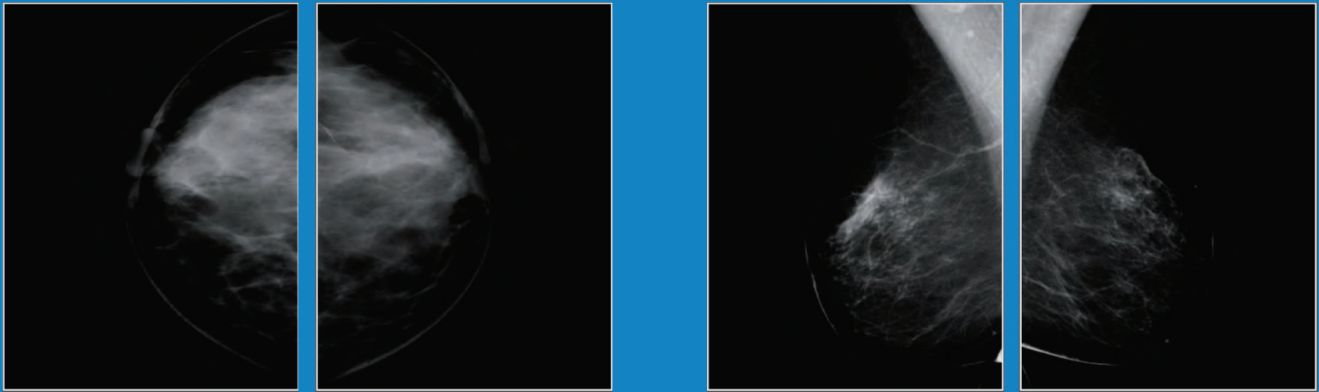


The image chain with elaborate configuration, lead to excellent image



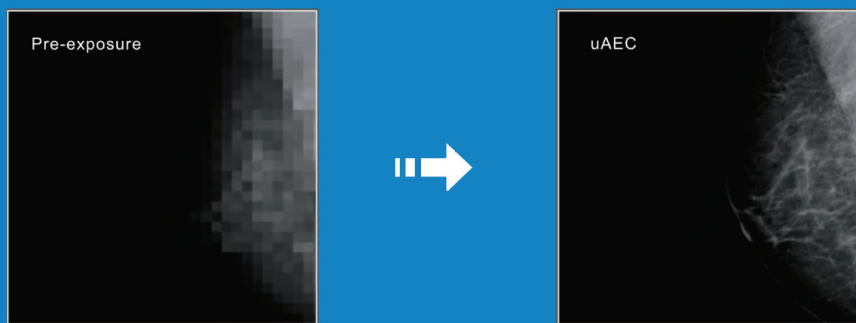
## IMAGE OPTIMAL PRESENTATION

Patent IMACOPE algorithm and based on the human visual system contrast equilibrium display ensure the mammary image presented by the optimal way



## SMART AEC (AUTOMATIC EXPOSURE CONTROL)

Advanced AEC filament automatic calibration and anode heat capacity automatic calibration; Double stable module of DC filament power supply makes the X-ray tube emission current more stable.

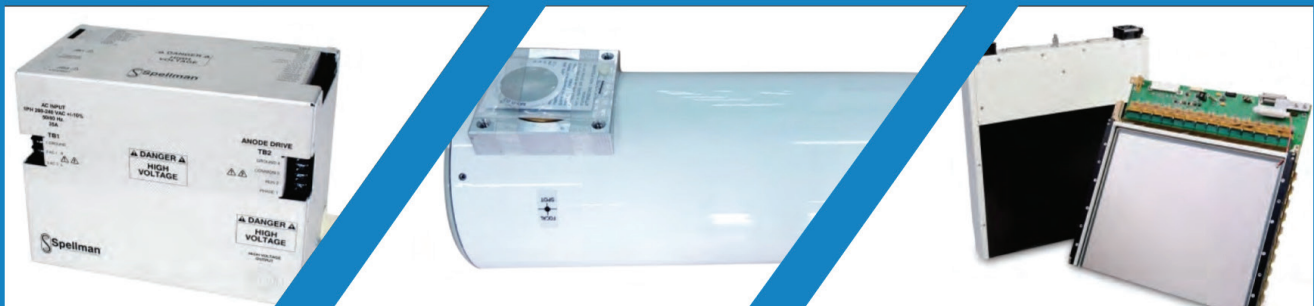


## DOUBLE FOCUS AND DOUBLE SPEED TUBE

High-power and high heat capacity tube with double focus and speed rotating anode design makes it have both sharp image and high load capacity.

## LARGE SIZE OF FPD

The A-Se FPD maximum size of 24cmx30cm makes X-ray signal transforming to electric signal directly ---reduce the noise and greatly improve the transform efficiency.







3403 NW 82nd Avenue, Suite 102 E.  
Doral, Florida 33122. USA  
[www.hosmed-inc.com](http://www.hosmed-inc.com)