



5 Position ICU Electric Bed

**LB5i**

Innovation That Elevates ICU Recovery



Call Us  
**+1 786 266-7795**



Visit Our Website  
**[hosmed-inc.com](http://hosmed-inc.com)**



# Where Critical Care Meets Complete Comfort



## Head and Foot Board

Extended head and foot boards with a curved, wrap-around design that provide a comforting and secure experience for patients.



## Bed Surface

Stamp-formed platform with a smooth, seamless surface and no welding marks, supporting up to 250 kg. Optional ABS platform or resin X-ray-translucent platform available.



## Welding | Chassis

Panasonic robotic ensure, 360° full smooth welding Solid bed base made of 5.0 mm stamped rotating plate.



## Electric Motor

"Linear motor compliant with UL, ROHS, and EN standards. Operates at under 50 dB and delivers a lifespan of over 20,000 movement cycles."

Call us for appointment and consultation +1 786 266-7795



3403 NW 82nd Avenue, Suite 102 E.  
Doral, Florida 33122

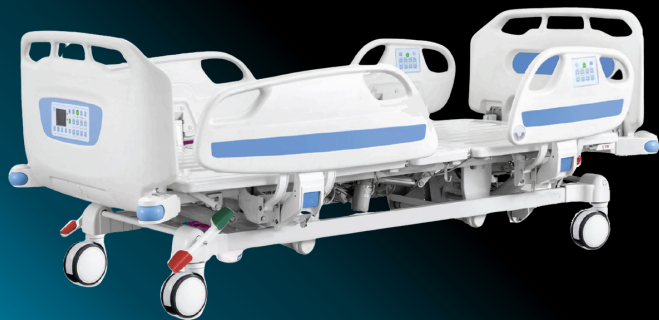


[www.hosmed-inc.com](http://www.hosmed-inc.com)



[info@hosmed-inc.com](mailto:info@hosmed-inc.com)

# Engineered for Safety. Designed for Healing



## Side Rail

Tuck-away side rails with shock-absorbing buffers, built-in controller, and integrated angle indicator.



## LCD

Uniquely designed head and foot boards with a built-in controller. The 4.3-inch LCD display shows real-time positioning angles. Buttons are tested to withstand over 100,000 presses.



## Steels | Painting

Made with Baosteel, ranked in the Fortune Global 500 Top 11. Features epoxy coating processed under ASTM standards—anti-bacterial, 0.12 mm paint thickness, 60° gloss level, and impact resistance up to 50 kg



## Virgin ABS

Eco-friendly plastic that can be sterilized at 100°C and offers tensile strength up to 30 MPa.



Call us for appointment and consultation +1 786 266-7795







# Reliability You Trust. Comfort They Feel



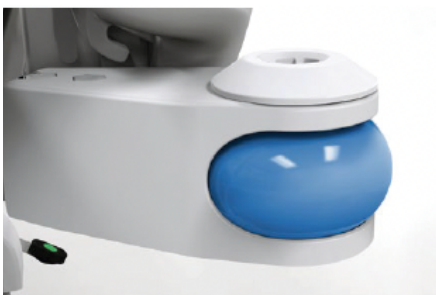
## Durable Brakes

The brake spring remains fully functional after 10,000 continuous braking cycles.



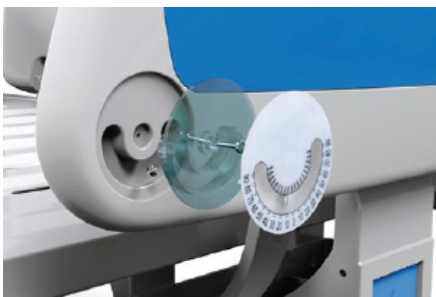
## Wheels

The TPR wheel shows no wear after running 30 km. It features an anti-winding hard shell, integrally formed without bolts. It passes dynamic testing under a 120 kg load, running 30 km and successfully clearing obstacles 500 times.



## Bumper Wheels

Our patented detachable bumper wheel offers maximum protection for both the bed and the patient during transport.



## Angle Indicator

Patented angle indicator.



Call us for appointment and consultation +1 786 266-7795





# Technical Chart

## Technical parameters

Bed surface size	Length	mm	1925±10
	width		900±10
	The lowest height of the bed from the ground		440±10
Dimensions	Length	mm	2300±10
	Width		1030±10
	Height		(440-735)±10
Tilt range	Back board	/	0-75±5°
	Leg board		0-35±5°
	Reverse Trendelenburg		0-12±5°
	Trendelenburg		0-12±5°
Weight	Safe working load	KG	250



## Technical configuration

Manual CPR	
One button stop	
One button trendelenburg	
Nurse lock system	
Angle indicator for back-rest and trendelenburg position	4 pcs
Linear motor	4 pcs
5" double side castors with central locking system	4 pcs
ABS side rail with integrated control panel	1 set
ABS bed ends with integrated LCD control panel	1 set
φ85 mm wall bumper wheel	4 pcs
Trapeze socket	2 pcs
IV pole	1 set
IV pole prevision	4 pcs
Drainage hook	2 pcs
Central locking pedal	2 pcs

## Optional

Electrical CPR
Weighing system with LCD Screen
Bed extension
Back-up battery
Cardiac position
ABS bed surface
X-ray bed surface
Monkey pole
Balkan traction frame
Directional wheel
Basic foam mattress (12 cm thickness)
Anti-decubitus foam mattress (14 cm thickness)
Vertical oxygen holder
Single arm lifting pole



5 Position ICU Electric Bed

**LB5i**

Innovation That Elevates ICU Recovery



Call Us  
**+1 786 266-7795**



Visit Our Website  
**[hosmed-inc.com](http://hosmed-inc.com)**